



Health Risk: Before opening and using our product please read this leaflet

EasyEarth Soil Conditioner: Closing the circle and creating a rich growing medium from local food waste, untreated wood mulch, and compostable packaging. Great for mixing in to soil to build nutrients, microbiome, and porosity.

Recommendations for use:

Spread a layer of EasyEarth Soil Conditioner up to 5cm thick and mix into your maara/garden soil with a kō or gardening fork.

Mix with soil at least 4soil:1 compost
Water gently until moist after mixing



Not suitable for direct planting of seeds or seedlings: mix it!

Batch 1 (17/05/2021)

Up to 1 year in the making!

- This compost is made of organic material: it includes living micro-organisms, like bacteria, fungi, and protozoa.
- Some of these microscopic critters can cause serious illness (including legionnaires disease).
- People at higher risk include: the elderly, smokers, those with impaired respiratory health and lower immunity.
- Avoid breathing dust or mist from this compost,
- Always wear gloves and wash your hands after working with it.
- Work in a well ventilated area,
- We recommend using a face-mask

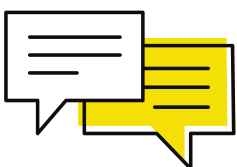


**Seek medical attention if you develop
Fever or respiratory problems**

**Keep out of reach of children and animals.
Keep in a cool, dry place until use.**

Feedback, and photos of your thriving plants,
very much welcome at our website www.easyearth.co.nz

If you have any issues with this product please get in touch,
Joe, our Compost Quality Technician, would love to
hear from you: compost@easyearth.co.nz



Composted in Whanganui
@ EasyEarth

